

Seqrite Endpoint Security 8.0

Quick Start Guide

Copyright Information

Copyright © 2008–2022 Quick Heal Technologies Ltd. All Rights Reserved.

No part of this publication may be reproduced, duplicated, or modified in any form or incorporated into any information retrieval system, electronic or any other media or transmitted in any form without prior permission of Quick Heal Technologies Limited, Marvel Edge, Office No.7010 C & D, 7th Floor, Viman Nagar, Pune 411014, Maharashtra, India.

Marketing, distribution or use by anyone barring the people authorized by Quick Heal Technologies Ltd. is liable to legal prosecution.

Trademarks

Seqrite and DNAScan are registered trademarks of Quick Heal Technologies Ltd. while Microsoft and Windows are registered trademarks of Microsoft Corporation. Other brands and product titles are trademarks of their respective holders.

License Terms

Installation and usage of Seqrite Endpoint Security is subject to user's unconditional acceptance of the Seqrite end-user license terms and conditions.

To read the license terms, visit <http://www.seqrite.com/eula> and check the End-User License Agreement for your product.

Contents

- 1. Overview 2
- 2. Preinstall: Check system requirements..... 2
 - System Requirements for Seqrite Endpoint Security Server 2
 - System requirements for client 2
- 3. Step 1: Download and execute the setup downloader 4
- 4. Step 2: Install the EPS Server 4
 - Installing EPS server on Linux Operating System 4
- 5. Step 3: Activating License 15
- 6. Step 4: Logging on to Seqrite Endpoint Security 16
- 7. Step 5: Install the EPS clients 16

Overview

This Quick Start Guide helps you, install, and set up Seqrite Endpoint Security server. The uninstallation procedure of Seqrite Endpoint Security is also mentioned.

Preinstall: Check system requirements

System Requirements for Seqrite Endpoint Security Server

System requirements for Seqrite Endpoint Security (EPS) server are as follows:

Component	Requirements
Processor	4 Core(x86-64) and above
RAM	8 GB or more
Hard disk space	40 GB or more free disk space
Web Browser	<ul style="list-style-type: none">• Google Chrome 62, 63, 64 or 65• Mozilla Firefox 56, 57, 58, 59, 62, 64 or 65
Display	1024 x 768
OS	Linux <ul style="list-style-type: none">• CentOS: 7.5, 7.9

System requirements for client

For Installing SEQRITE Endpoint Security client through client install utility, the System requirements are as follows:

- 3.10 GB free hard disk space
- Any one of the following operating systems:
 - Windows OS
 - Microsoft Windows 2008 Server R2 Web / Standard / Enterprise / Datacenter (64-bit)
 - Microsoft Windows 2008 Server Web / Standard / Enterprise (32-bit/64-bit) / Datacenter (64-bit)
 - Microsoft Windows 7 Home Basic/ Premium / Professional / Enterprise / Ultimate (32-bit/64-bit)
 - Microsoft Windows SBS 2011 Standard / Essentials
 - Microsoft Windows Server 2012 R2 Standard / Datacenter (64-bit)
 - Microsoft Windows Server 2012 Standard / Essentials / Foundation / Storage Server / Datacenter (64-bit)

- Microsoft Windows 8.1 Professional / Enterprise (32-bit/64-bit)
- Microsoft Windows 10 Home / Pro / Enterprise / Education (32-Bit / 64 - Bit)
- Microsoft Windows 11
- Microsoft Windows Server 2016
- Microsoft Windows Server 2019 (64-bit)
- Windows 10 November 2019 Update
- Microsoft Windows Server 2022 Standard / Datacenter / Essentials

Note

- For Windows 2008 Server R2, you need to install updates, please See [KB4474419](#) and [KB4490628](#).
- For Windows 7, you need to install updates, please See [KB4474419](#) and [KB4490628](#).
- For Windows Server 2019 and Server 2022, you need to uninstall Windows Defender.
- Mac
 - Processor:
 - Intel core or Apple's M1 chip compatible
 - Mac OS X 10.9 to macOS Catalina 10.15, Big Sur 11, Monterey 12
- Linux 32-bit
 - GNU C Library 2.5 and later
 - SAMBA version 4.12 and earlier
 - Supported Distributions for EPS client:
 - Debian 9, 10
 - Ubuntu 14.04,16.04
 - Boss 6.0
 - Linux Mint 19.3
- Linux 64-bit
 - GNU C Library 2.5 and later
 - SAMBA version 4.12 and earlier
 - Supported Distributions for EPS client:
 - Fedora 30, 32
 - Linux Mint 19.3, 20
 - Ubuntu 16.04, 18.04, 20.4, 22.04

- Debian 9, 10
- CentOS 7.8, 8.2
- RHEL 7.8 , 8.2 Enterprise
- SUSE Linux 12. SP4 / Enterprise Desktop 15
- Rocky Linux 8.4

Step 1: Download and execute the setup downloader

Download the Seqrite Endpoint Security server installation file.

You can download the installer from the following CDN location.

<http://download.quickheal.com/builds/seqrite/80/en/build/>

Step 2: Install the EPS Server

Here the installation procedure is explained. The installation takes place in 20 -25 minutes. Please wait till the procedure is completed.

Installing EPS server on Linux Operating System

To begin installation of Seqrite Endpoint Security server (EPS) on CentOS, follow these steps:

1. Open the terminal on your Linux endpoint and log in as a root user.
2. To execute the Installer in **CLI (non-GUI)** mode, type the following command:

```
sh Seqrite_EndPoint_Security_8_0.sh -c
```

-c component in the above command opens the Installer in command line.

or

To execute the Installer in **GUI** mode, type the following command:

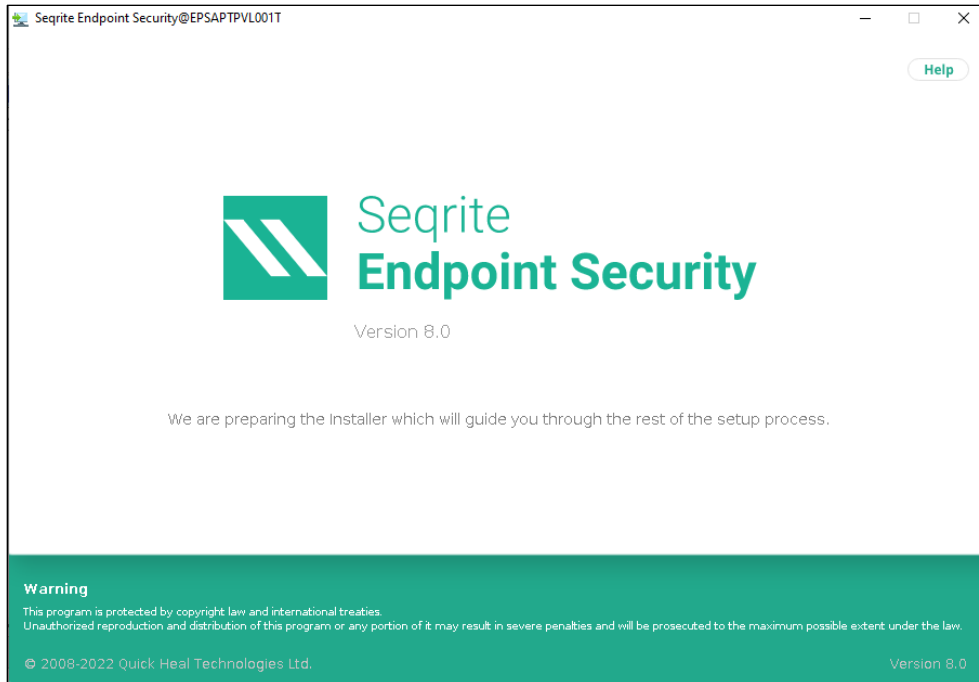
```
sh Seqrite_EndPoint_Security_8_0.sh
```

Note

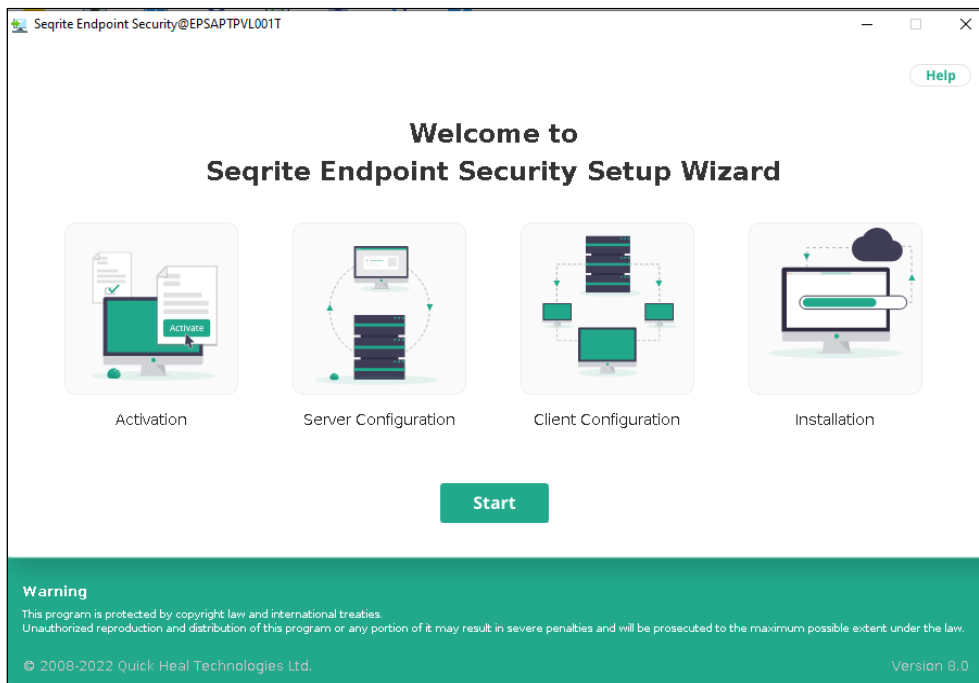
To read the installation process in CLI mode, refer [Installing EPS Server on Linux Operating System](#) page.

Here the installation process in GUI mode is explained.

The SEPS setup wizard starts.

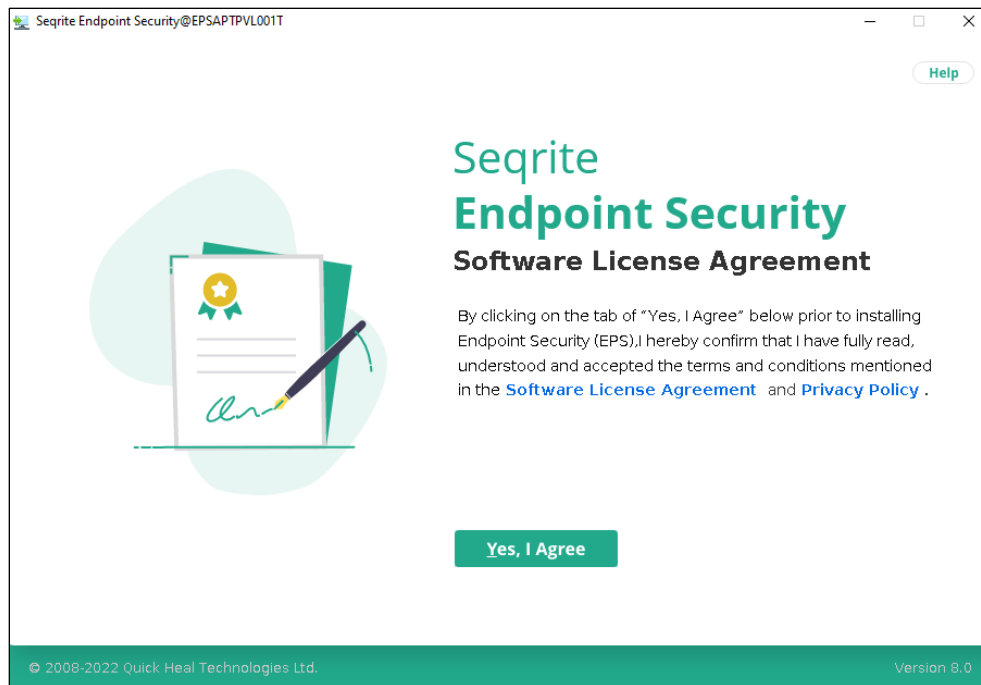


3. The Welcome screen appears. Click **Start**.



4. The license agreement appears. Read the License Agreement carefully. Installation and usage of Seqrite Endpoint Security is subject to your formal acceptance of the Seqrite Endpoint Security end-user license terms and conditions.

Click **Yes, I Agree** to accept the license agreement.



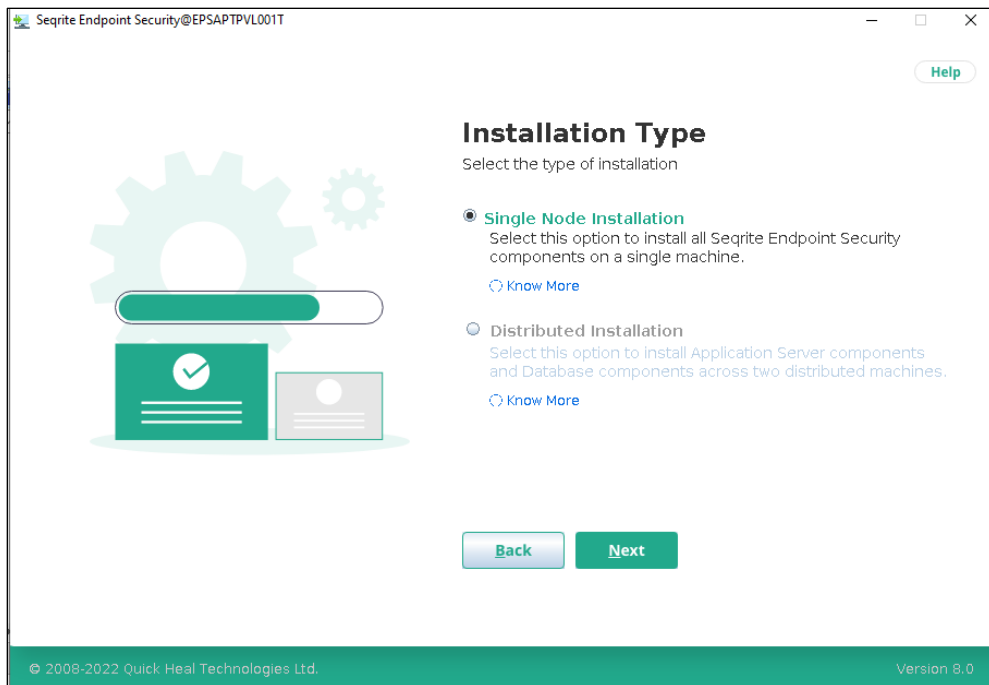
5. Select one of the following Installation types:

- **Single Node Installation** - Select this option to install all EPS components on a single node /server.
- **Distributed Installation** - The components are distributed on two machines. On the First machine, Application server components are installed and on Second machine, DB Server components are installed.

Important

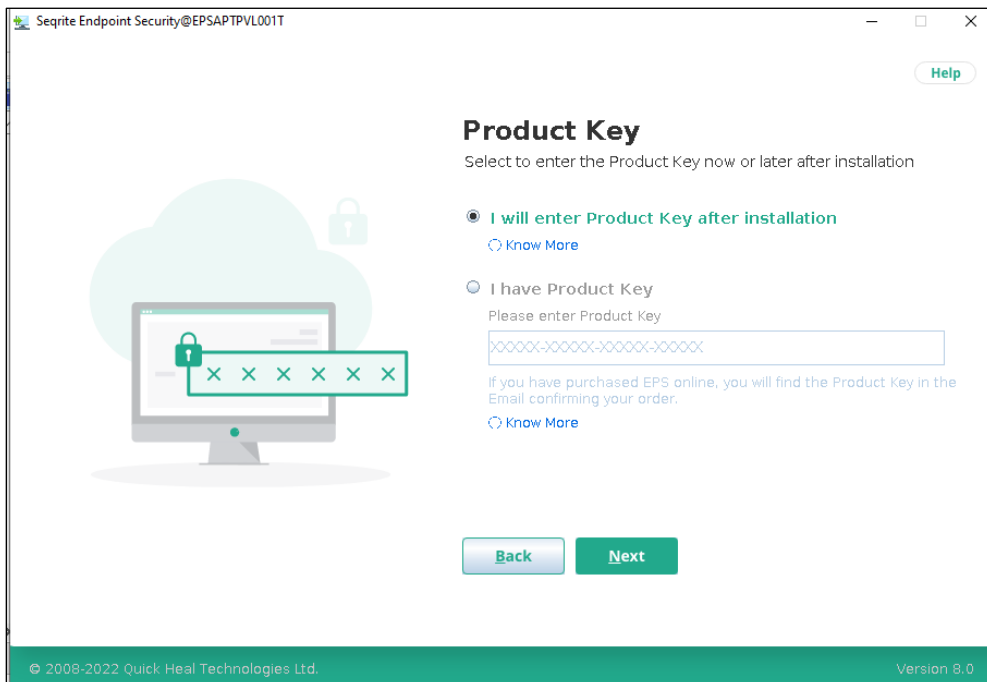
Ensure the Distributed Server is with Centos 7.5 and in the same network.

Click **Next**.



6. In the Product Key screen, select one of the following:

- **I will enter Product Key after Installation**
- **I have Product Key**



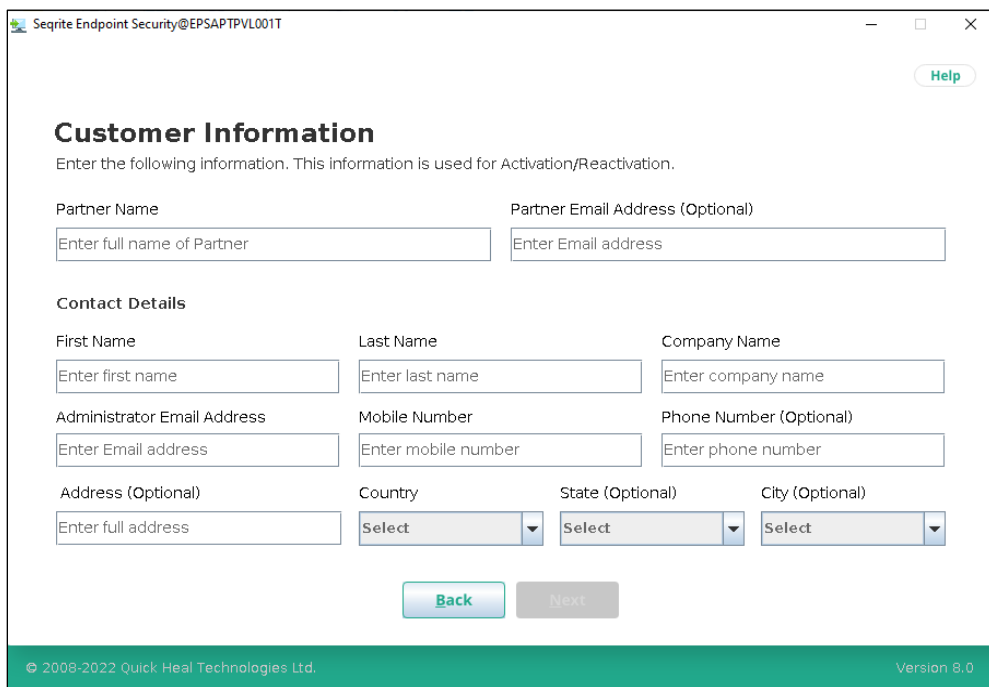
- If you select, **I will enter Product Key after Installation**, the installation of Seqrite Endpoint Security will be done. But you must provide the Product Key when you log

on for the first time to Seqrite Endpoint Security console. The Product Key activates Seqrite Endpoint Security product.

- If you do not have internet access, select **I will enter Product Key after Installation**, option.
- If you select, **I have Product Key**, enter Product key carefully. The Product Key will be validated. The success message appears. Only 3 attempts are allowed to enter the Product Key.

Click **Next**.

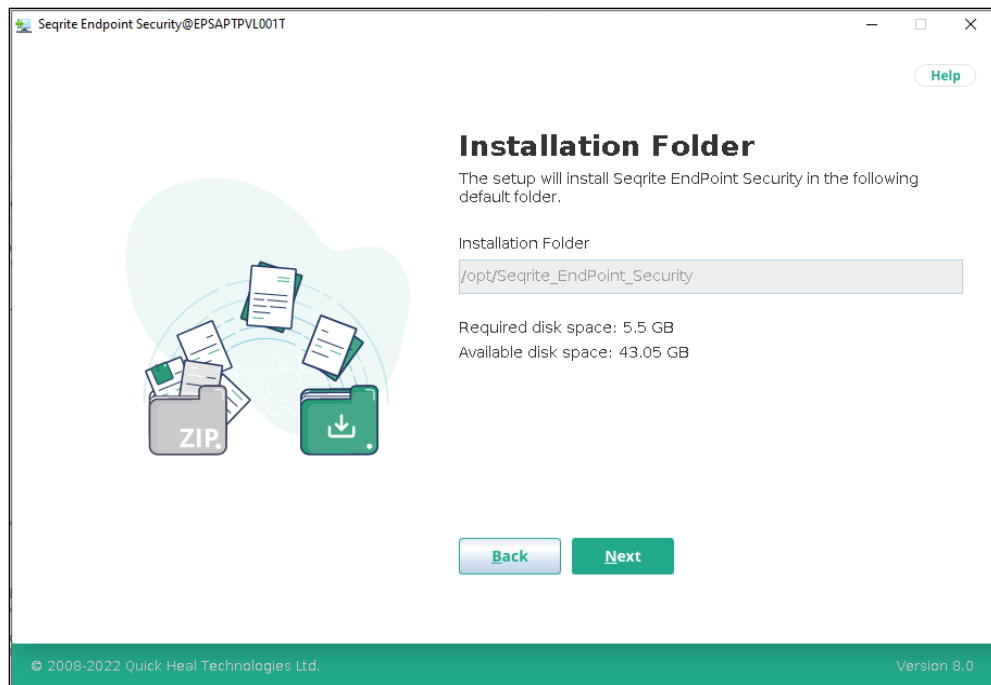
7. On the Customer Information, enter information about the customer in the text boxes. The format for entering Email address, mobile number appear while entering the data. Mobile number format should be +<country code> - <mobile number> Example:+91-8080808080. This information is important to activate Seqrite EPS on your machine. Click **Next**.



The screenshot shows a web browser window titled "Seqrite Endpoint Security@EPSAPTPVL001T". The page has a "Help" button in the top right corner. The main heading is "Customer Information" with a sub-heading "Enter the following information. This information is used for Activation/Reactivation." Below this, there are two input fields: "Partner Name" (with placeholder "Enter full name of Partner") and "Partner Email Address (Optional)" (with placeholder "Enter Email address"). Under the "Contact Details" section, there are three columns of input fields: "First Name" (placeholder "Enter first name"), "Last Name" (placeholder "Enter last name"), and "Company Name" (placeholder "Enter company name"). Below these are "Administrator Email Address" (placeholder "Enter Email address"), "Mobile Number" (placeholder "Enter mobile number"), and "Phone Number (Optional)" (placeholder "Enter phone number"). At the bottom of the form are "Address (Optional)" (placeholder "Enter full address"), "Country" (dropdown menu with "Select"), "State (Optional)" (dropdown menu with "Select"), and "City (Optional)" (dropdown menu with "Select"). At the bottom center, there are "Back" and "Next" buttons. The footer contains "© 2008-2022 Quick Heal Technologies Ltd." on the left and "Version 8.0" on the right.

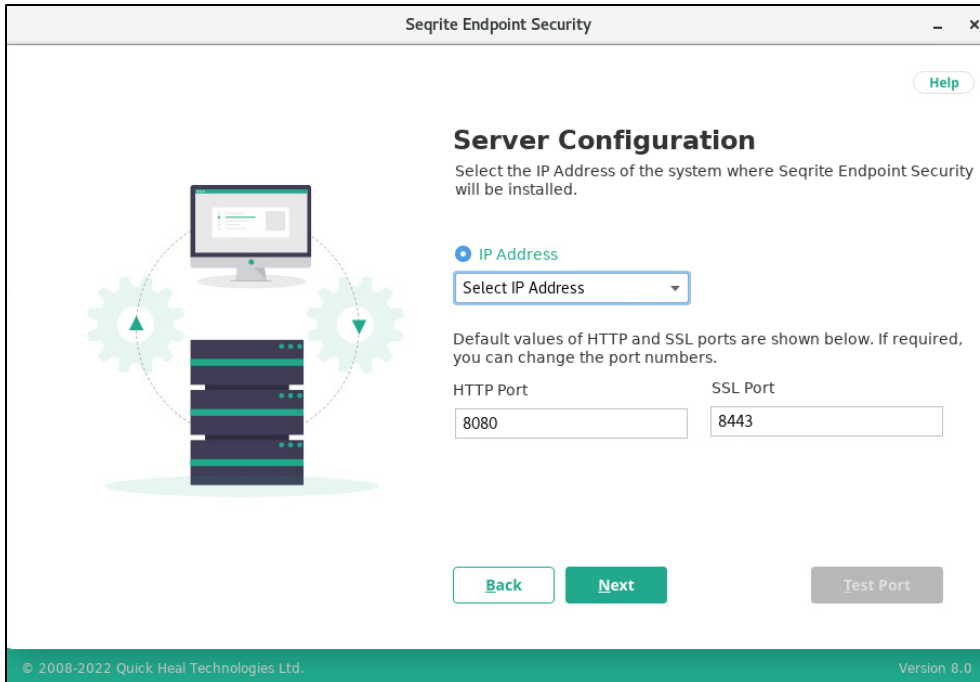
8. The Setup will install Seqrite Endpoint Security in the default folder. The folder path appears. Available and required disk space is calculated automatically and the figures are displayed.

Click **Next**. Ensure that there is required space available on the disk. If there is not enough space, free up space and click Retry.

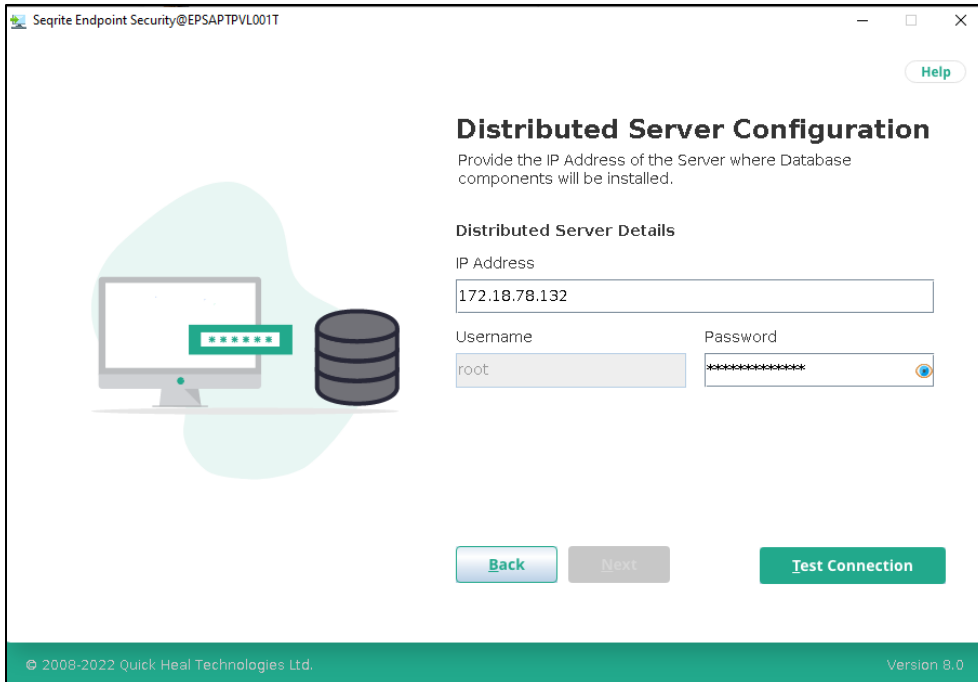


9. The Server Configuration screen appears.

- Here for Private IP or Public or FQDN installation, select **IP Address** from the list.
Note: Client will communicate to the Server through IP Address provided by you. Ensure that, the IP Address is reachable
- Default values of **HTTP Port** and **SSL Port** appears. Click **Test Port**.
The port connections are tested, and port numbers are validated.
This port number serves as a listening port for the server. With Seqrite Endpoint Security server address, you can launch the console.
- Click **Next**.



10. If you select, **Distributed Installation** in step 5, then only Distributed Server Configuration screen appears. Else, the Proxy Settings screen appears, go to step 11.
 - a. Enter **IP address** of the Distributed Server.
 - b. In the **Username** and **Password** text boxes, type in your user credentials.
 - c. Click **Test Connection**. The Application server when connected successfully to the Distributed Server, the success message appears.
 - d. Click **Next**.



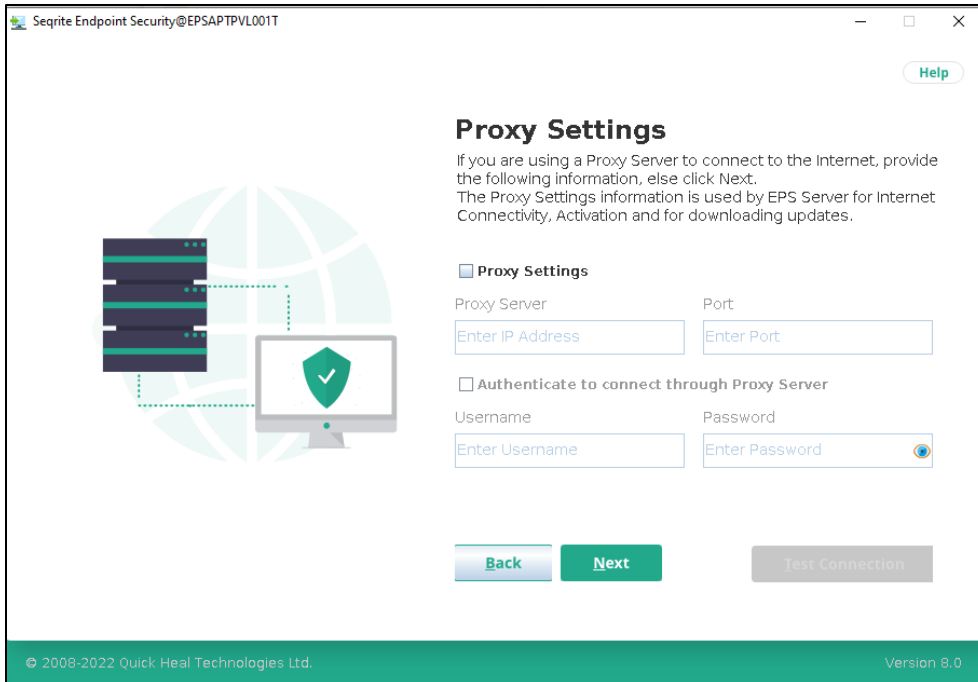
11. The Proxy Settings screen appears.

If you are using a proxy server to connect to the Internet, provide the following information, else click **Next**.

The Proxy Setting information is used by EPS server for internet connectivity, activation and for downloading updates.

To enable and configure proxy settings:

- a. Select the **Enable Proxy Settings** check box.
- b. Select the **Proxy Type** as HTTP or HTTPS.
- c. In the **Proxy Server** text box, type the IP address of the proxy server or domain name (For example, proxy.yourcompany.com).
- d. In the **Port** text box, type the port number of the proxy server (For example: 80).
- e. Select the **Authenticate to connect through Proxy server** check box. Username and Password fields are enabled.
- f. In the **User Name** and **Password** text boxes, type in your proxy server credentials.
- g. Click **Test Connection**. The success message appears if the connection to the proxy server is successful.
- h. Click **Next**.

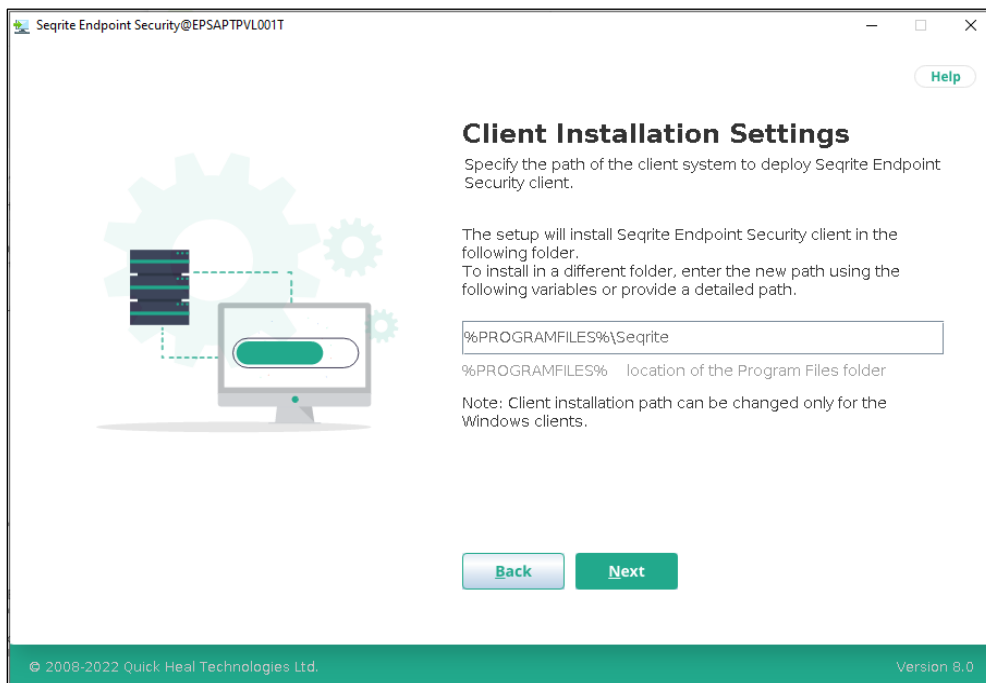


12. The Client Installation Settings screen appears.

Seqrite client is installed on the endpoint as per the path specified in this screen. The following settings are displayed:

Default endpoint installation path appears. You can change the installation path.

Click **Next**.



13. The Authentication screen appears.

Create Seqrite Endpoint Security administrator password to access the Web console and endpoint password to access the endpoint settings at the endpoint side.

- a. Type in Administrator Email Address. Type in your password in the **Password** and **Confirm password** text boxes.
- b. In the Client Password section, type in your password in the **Password** and **Confirm password** text boxes. This is optional.
- c. This helps prevent unauthorized users from accessing the Web console and make changes in your settings or remove the endpoints.
- d. Click **Next**.

Seqrite Endpoint Security@EPSAPTPVL001T

Help

Authentication

Prevent unauthorized access to Seqrite Endpoint Security

Provide Administrator credentials here. To access EPS console, use these credentials after installation.

Administrator Email Address

manisha.singatkar@gmail.com

Password Password Confirm Password

Password Password Confirm Password

You can provide Client password here. To access EPS Client, use this password after installation. (Optional)

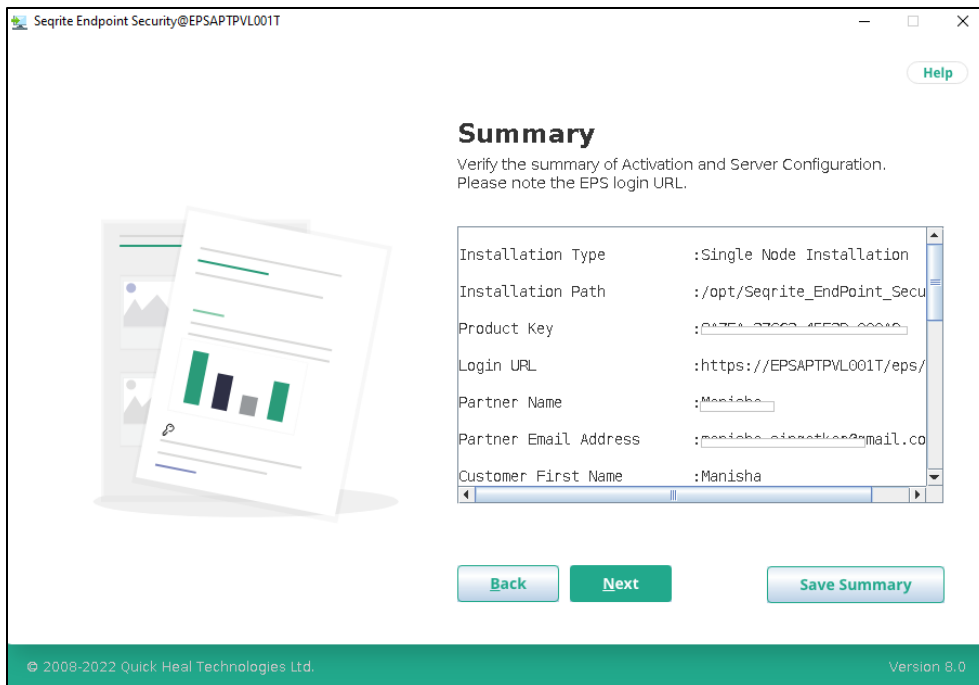
Password Password Confirm Password

Password Password Confirm Password

Back Next

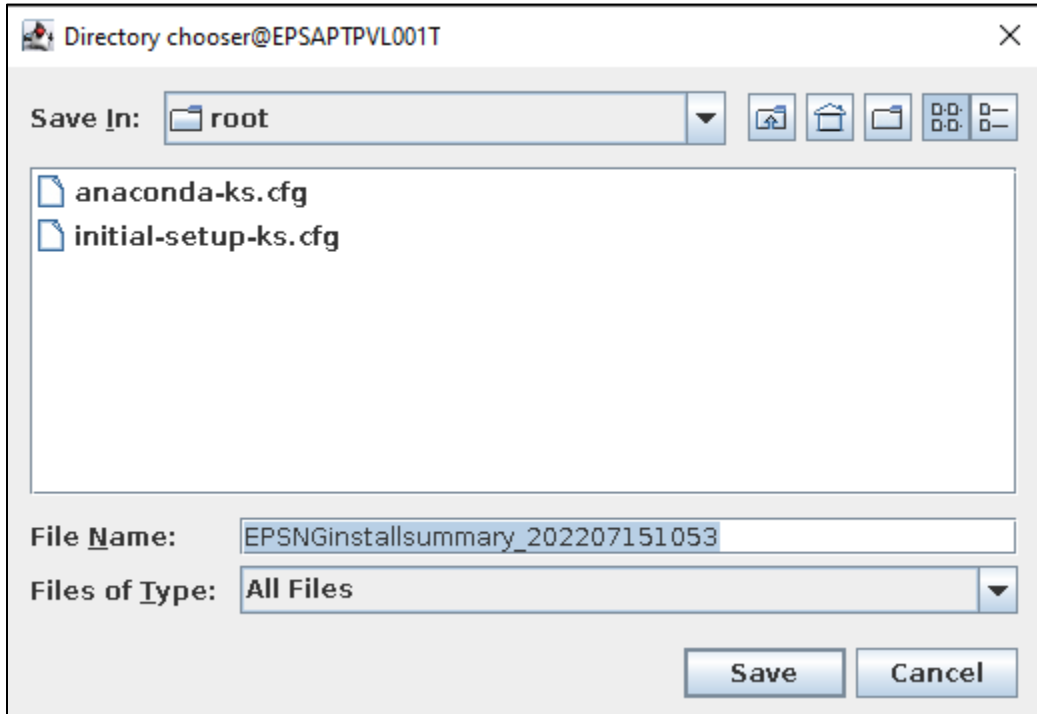
© 2008-2022 Quick Heal Technologies Ltd. Version 8.0

14. The installation summary screen appears. Activation and Server Configuration data is displayed. Please note the EPS login URL. The format of login URL is <https://IP/eps/login>. Click **Next**.



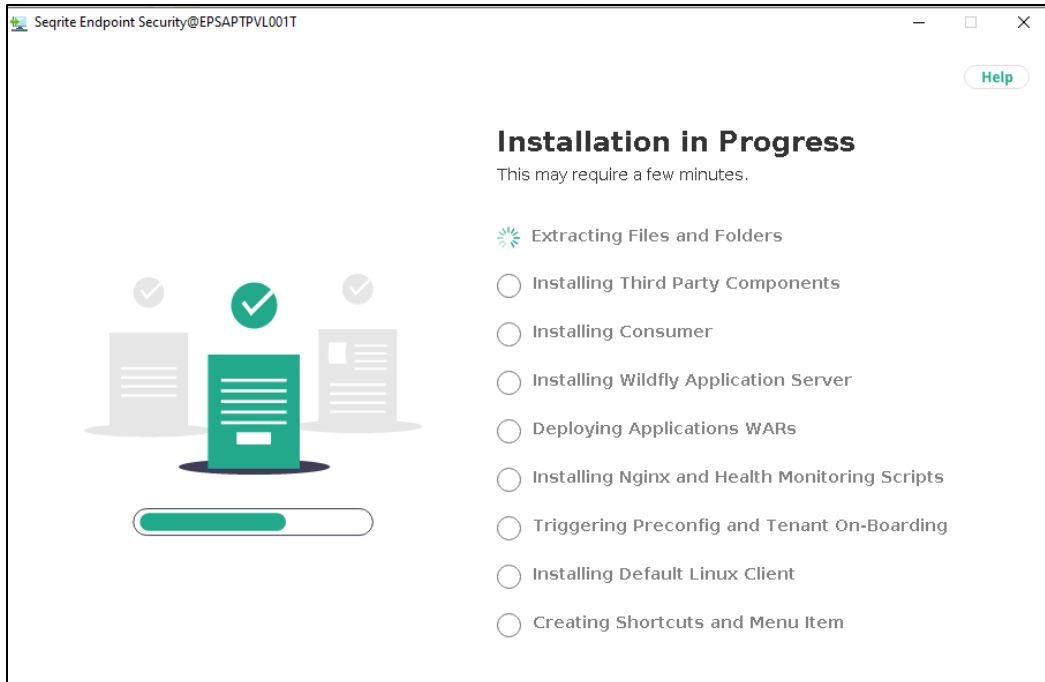
15. You can save the summary. Click **Save Summary** Button.

16. Directory Chooser dialog appears. The filename appears with current date and time. Click **Save**.

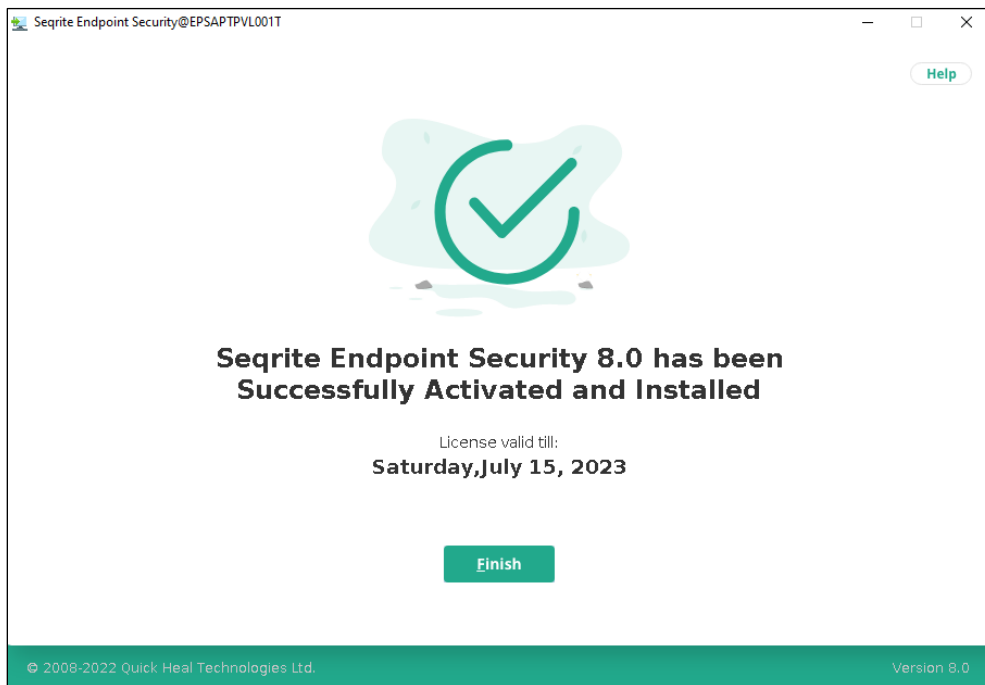


The installation process starts.

Success screen appears.



17. To complete the installation, click **Finish**.



Step 3: Activating License

During installation, in the Product Key screen,

If you have selected, **I will enter Product Key after Installation** option, when you log on for the first time to Seqrite Endpoint Security console, provide the Product Key. The Product Key activates Seqrite Endpoint Security product.

- **Offline Activation**

If you do not have Internet, do the following.

1. Once installation is complete, copy the `offline_activation` text file from the path, `/opt/Seqrite_EndPoint_Security/tools/offline_activation`
2. Share the file with the Seqrite Technical support.
3. The support will activate the license. The support will share the `ofresponse.txt` file.
4. Copy above file to the path,
`/opt/Seqrite_EndPoint_Security/tools/offline_activation`
5. From `offline_activation` folder, run the `offlineclientactivation.sh` file.
EPS will be activated successfully on your machine.`vs`

- If you have selected, **I have Product Key**, and entered Product key correctly. The activation is being done during installation procedure.

Step 4: Logging on to Seqrite Endpoint Security

Paste the login URL which you have noted down from Summary, in the browser of your system.

The EPS console home page appears.

Step 5: Install the EPS clients

For information about installing the clients, refer [Deployment](#) page.